



Eastbury Grove, London
Guide Price £1,400,000

WHITMAN & CO.

SALES · LETTINGS · COMMERCIAL



An immaculately presented five-bedroom period family home, ideally located in a sought-after residential area, offering easy access to a wide range of local amenities.

The property comprises five bedrooms, two bathrooms, a formal front reception room, a stunning 36' bespoke kitchen/breakfast room, a guest cloakroom, utility cupboard, and a private west-facing landscaped garden.

Conveniently situated close to Turnham Green Tube Station and a number of local bus routes, as well as the extensive array of shops, bars, and restaurants on Chiswick High Road. Offered with no onward chain.



Eastbury Grove, W4

Approximate gross internal area

171.59 sq m / 1847 sq ft

(Including Eaves Storage)

Eaves Storage : 9.56 sq m / 103 sq ft

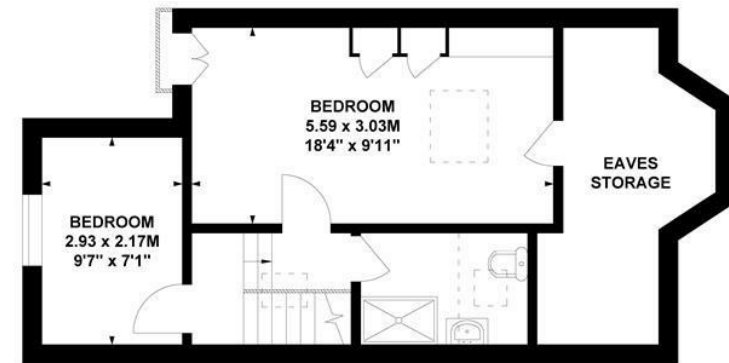


Key :

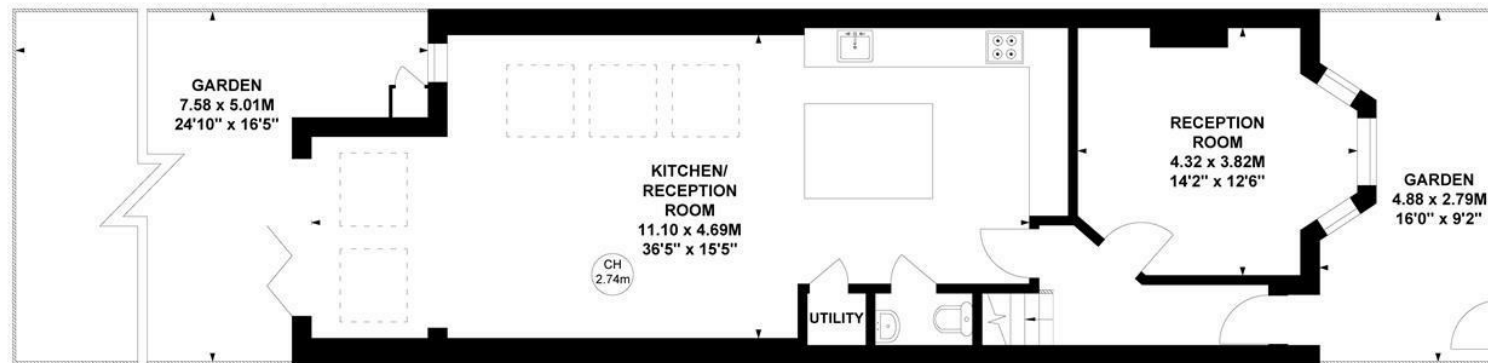
CH - Ceiling Height



First Floor



Second Floor



Ground Floor

Not to scale, for guidance only and must not be relied upon as a statement of fact.

All measurements and areas are approximate only

- Five bedrooms/two bathrooms
- Fantastic transport links
- Sought after location

- Private west-facing garden
- 36' bespoke kitchen
- No onward chain

Tenure - Freehold
Local Authority - Hounslow
Council Tax - Band F

